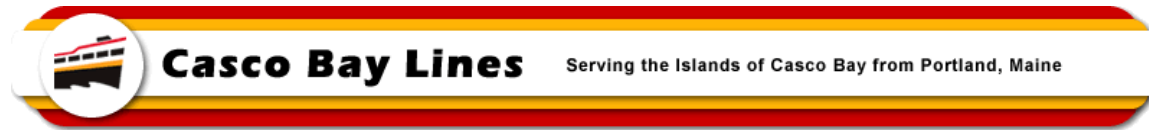


MEMO



TO: File

FROM: Paul D. Pottle, Director of Projects

DATE: December 5, 2023

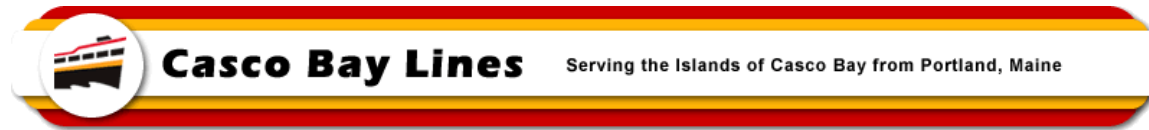
SUBJECT: Construction Progress-Photos for MV Battery Steele at Senesco - #5

This report covers construction at the Senesco Shipyard for the months of October and November 2023. Work continues to move along well. Based on discussions with the shipyard and the impact of the battery change, the delivery date for the vessel has been moved to late August 2024 from the June 2024 date. The last two months focused on assembling all the hull section modules together as well as to start installing some of the superstructure modules. The electronic equipment for the propulsion systems continues to move forward and several more components have been shipped and received by the shipyard. Submissions to and inspections by the US Coast Guard are ongoing, with no major issues identified as of this writing. You will also notice that the vessel is now being referred to as Battery Steele. At the September 28th Board Meeting, the Board voted to name the vessel Battery Steele, which will now be included on all the documentation to the Coast Guard.

The following is a brief overview of the work done from October 1st to November 30th of 2023:

- Crowley Engineering continues to work on plan development for both US Coast Guard submission and for the shipyard to follow for actually building the vessel.
- Submissions continue to be responded to or accepted by the US Coast Guard (Marine Safety Center).
- The completion date for the vessel was moved from June 14th, 2024 to September 7th, 2024. The shipyard plans to try and deliver the vessel in early August if possible.
- The expected power consumption for the vessel has increased as equipment and details are finalized and as a result, CBL authorized an additional string of batteries to help ensure that the battery life expectancy would be as planned and that there would be no issues with operating over the life of the vessel.
- Module 4 was moved to the assembly area and connected to modules 2 & 3.
- Final welding has been ongoing for modules 2, 3 & 4.
- Module 1 (Peaks End or Bow) was finished in the fabrication building and moved to the assembly area for connection with the other modules (2, 3 & 4). Welding is ongoing.
- Module 5 (Mainland End or Stern) was finished in the fabrication building and moved to the assembly area for connection with the other modules (1, 2, 3 & 4). Welding is ongoing.
- Module 7, which makes up the main deck cabin spaces was fabricated and erected on the hull modules, to include the 01 deck plating sections that fit over the cabins.
- Module 10, which makes up the 01 deck cabin spaces was fabricated and erected on top of Module 7, to include the 02 deck plating sections that fit over the cabins and the vehicle alleyway.

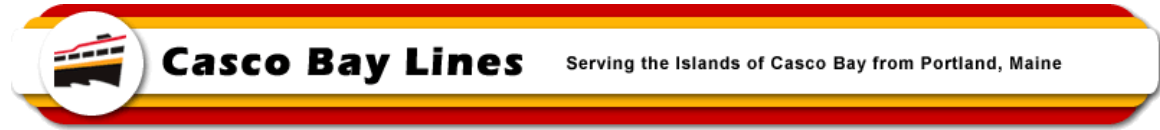
MEMO



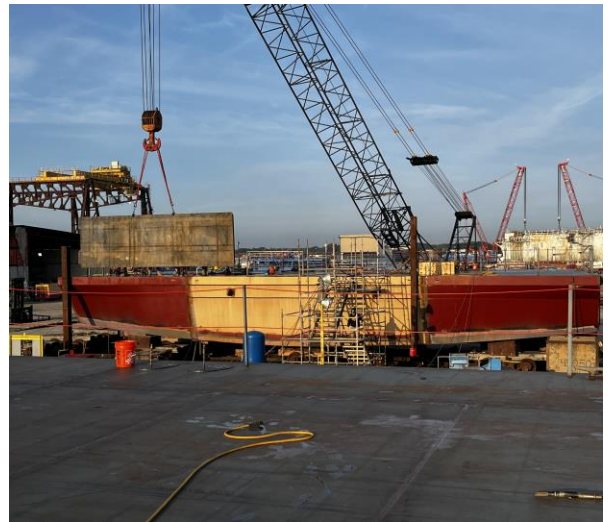
- Additional equipment continues to be delivered to the shipyard for incorporation into the vessel.
- Work in the engine room area is ongoing in preparation of setting equipment and doing piping and electrical support work. Much of that will start after all welds have been completed, inspected by the US Coast Guard and at least had the primer and possibly several coats of paint applied.
- The Regional Administrator for the Federal Transit Administration along with several members of the staff made a site visit to the shipyard on November 15th to see firsthand the progress of the ferry Battery Steele. Staff from CBL joined them on the visit.

Additional update memos will follow as the work progresses so that those interested in the work can follow along without having to be at the shipyard.

MEMO



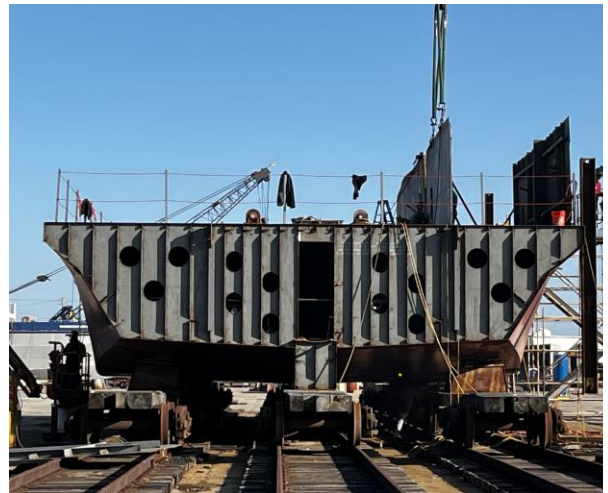
9556 – Module 1 (Bow-Peaks End) Ready to be Moved to Assembly Area.



3270 – Setting Module 7 Bulkhead (Main Deck Cabin – Port Side)

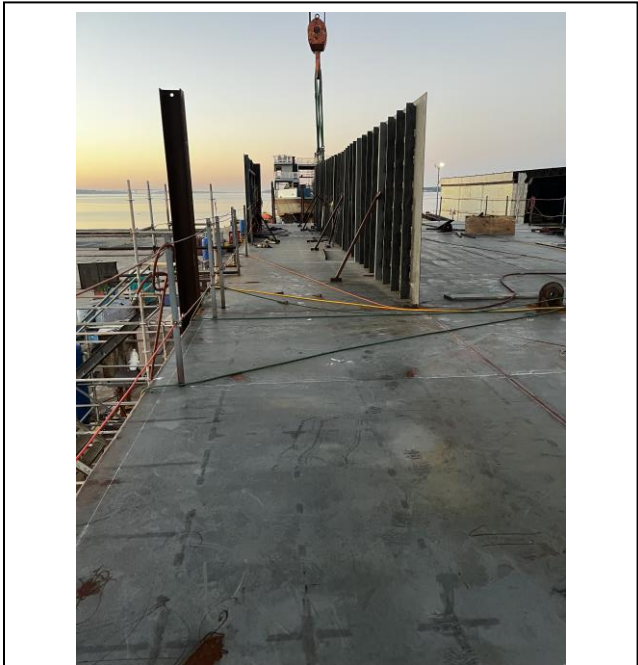
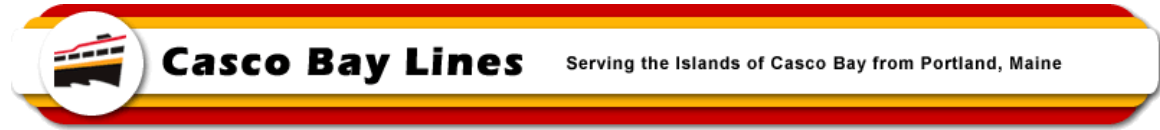


3277- Setting Module 7 Bulkheads (Main Deck Cabin – Port Side)

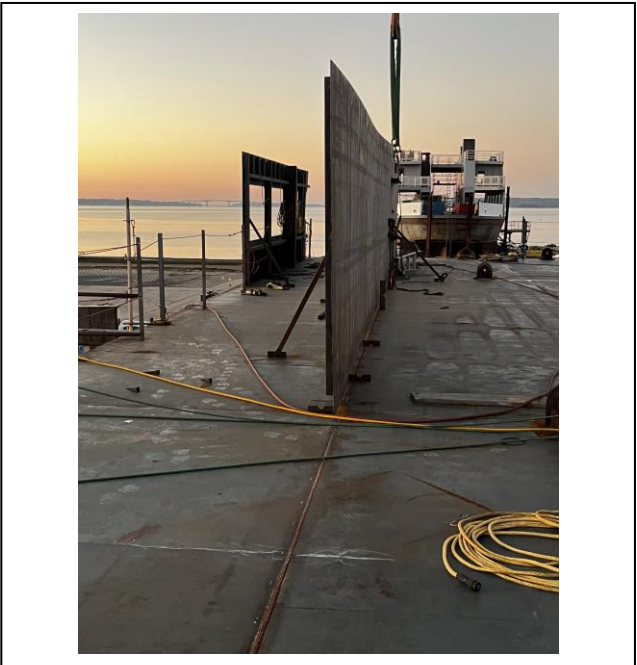


3278 - Setting Module 7 Bulkheads (Main Deck Cabin – Port Side)

MEMO



3282 – Main Deck Cabin Bulkheads (Module 7),
Port Side Looking Towards the Bow



3283 - Main Deck Cabin Bulkheads (Module 7),
Port Side Looking Towards the Bow

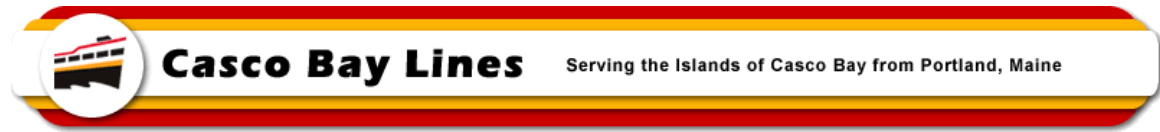


3284 – 1st Module 7 Bulkhead for Main Deck
Starboard Cabin

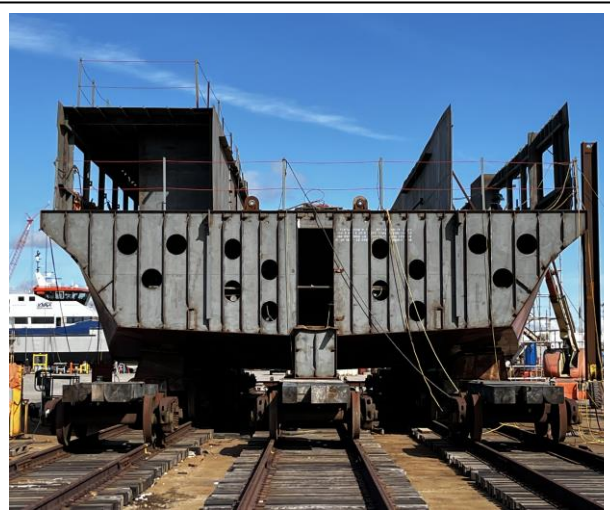


3329 – All Module 7 Longitudinal Bulkheads in
Place for the Main Deck Cabins. 01 Deck Plate in
Place over Starboard Cabin.

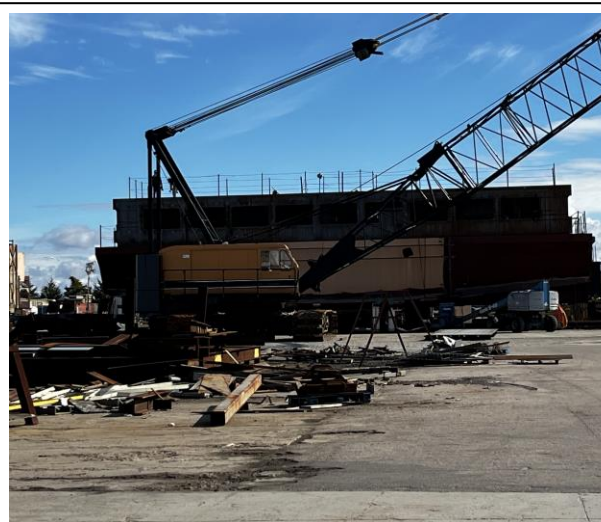
MEMO



3330 - All Module 7 Longitudinal Bulkheads in Place for the Main Deck Cabins. 01 Deck Plate in Place over Starboard Cabin.



3332 - All Module 7 Longitudinal Bulkheads in Place for the Main Deck Cabins. 01 Deck Plate in Place over Starboard Cabin.

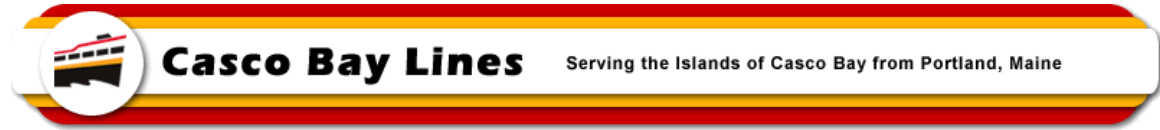


3333 – Module 7 in Place , Starboard Side



3340 – Yard Trailer (Shirley) Ready to Have Module 1 loaded on for Moving to Assembly Area

MEMO



3343 – Module 1 (Bow End) Lifted and Ready to be Loaded on Trailer



3344 - Module 1 Lifted and Ready to be Loaded on Trailer, Starting to Move Trailer Under the Module

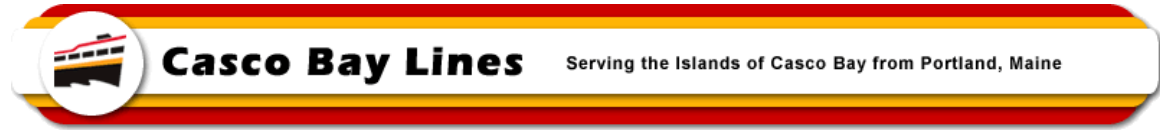


3345 - Module 1 Lifted and Ready to be Loaded on Trailer, Moving Trailer Under the Module



3346 - Module 1 Lifted and Ready to be Loaded on Trailer, Moving Trailer Under the Module

MEMO



3347 - Module 1 Lifted and Ready to be Loaded on Trailer, Trailer Almost in Place Under the Module



3348 - Module 1 Lifted and Ready to be Loaded on Trailer, Trailer Almost in Place Under the Module

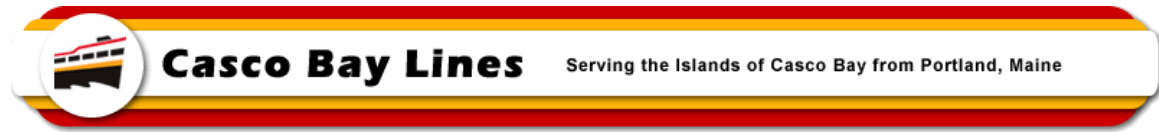


3349 - Module 1 Lifted and Almost Set on the Trailer



3350 - Module 1 Lifted and Almost Set on the Trailer

MEMO



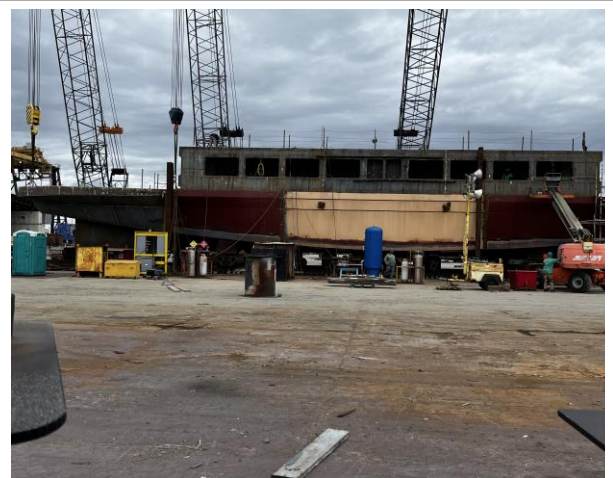
3352 – Module 1 Heading Towards the Assembly Area (Erection Yard)



3353 - Module 1 Heading Towards the Assembly Area (Erection Yard)

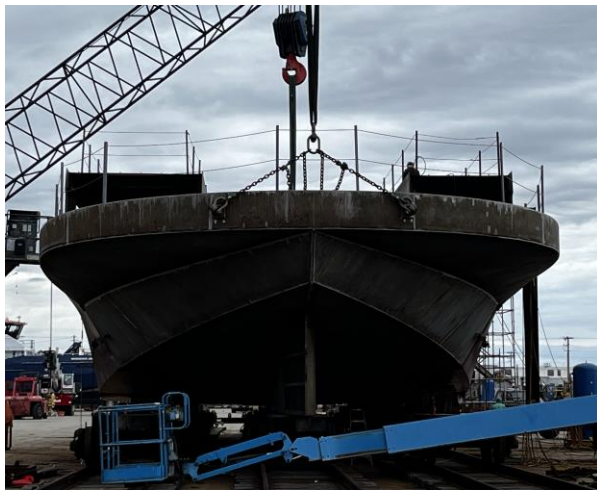
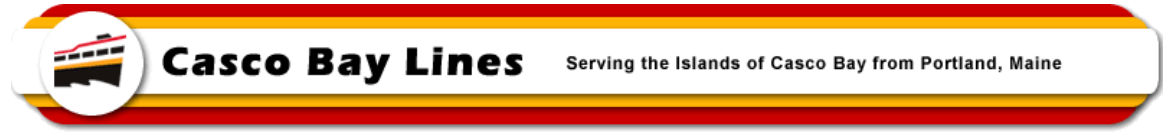


3354 – Prepping Module 1 for Lifting and Aligning with Modules 2, 3 & 4

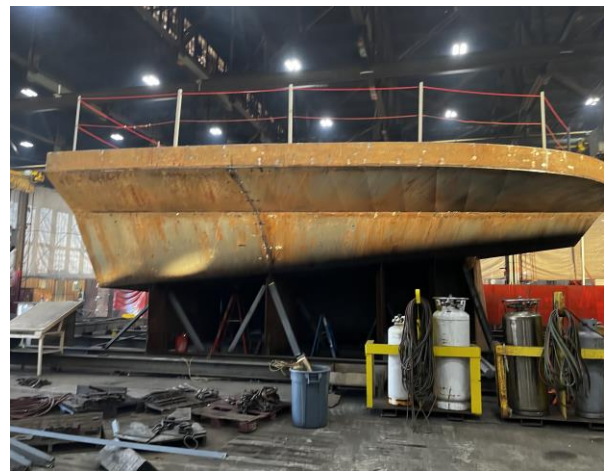


3356 – Moving Module 1 into position with Modules 2, 3 & 4

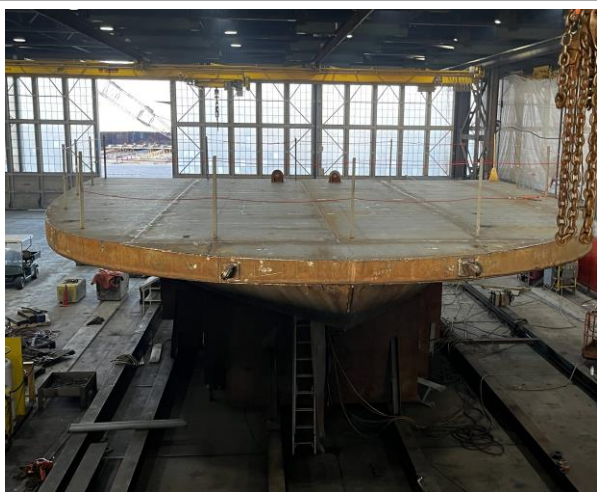
MEMO



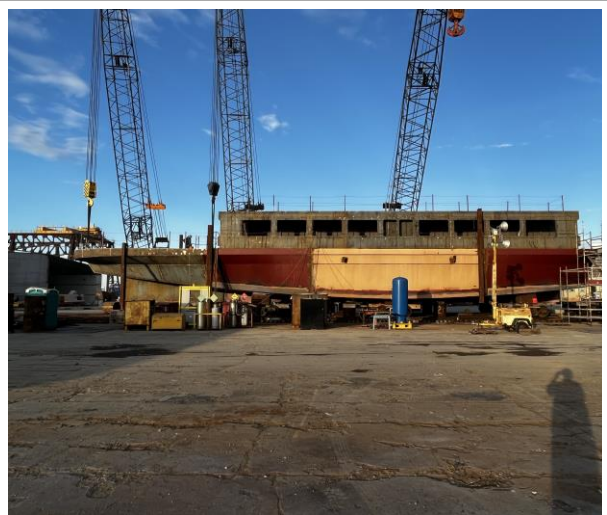
3357 – Lifting Module 1 onto the Blocking for the Vessel



3376 – Module 5 (Stern End) Being Final Welded

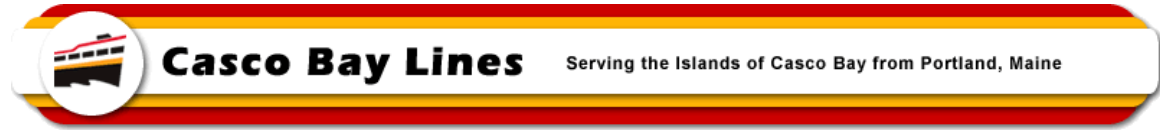


3377 – Module 5 Almost Ready to be Moved to the Assembly Area

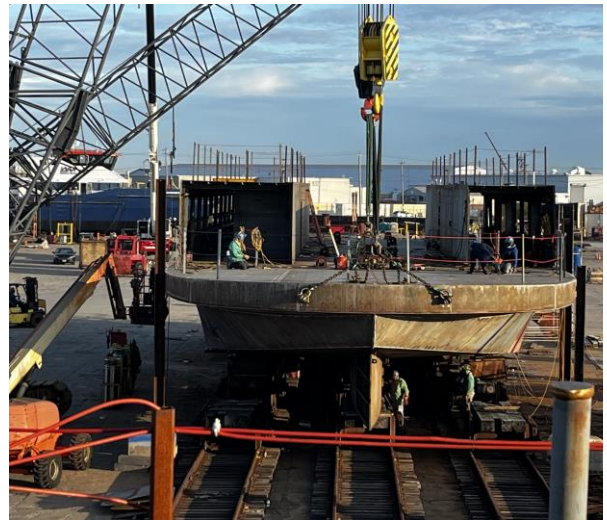


3380 – Ready to Start Connecting Module 1 to Other Modules

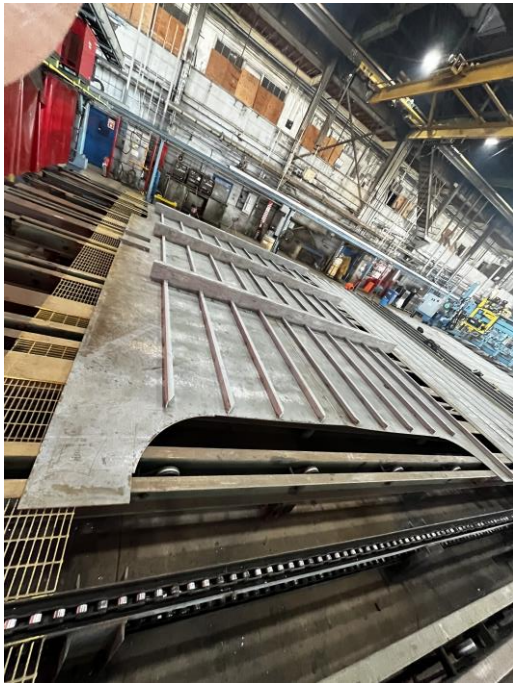
MEMO



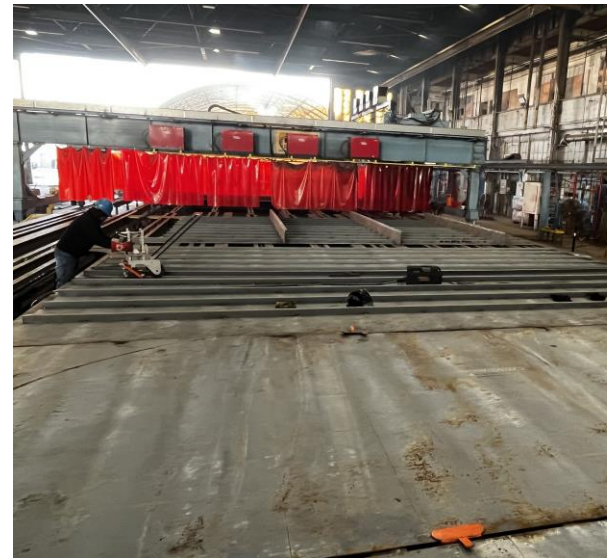
3381 – Module 1 Setting on the Erection Blocking



3382 – Module 1 in Place, Checking Alignments

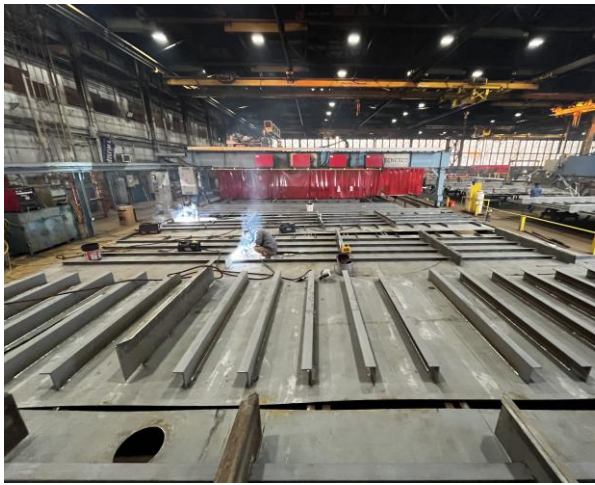
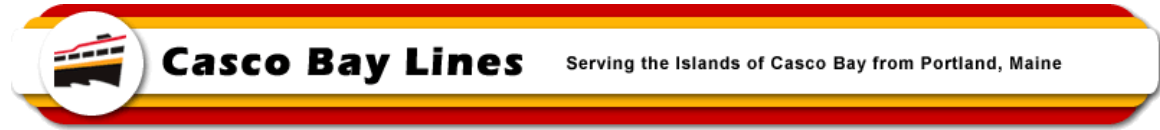


3385 – Module 10 Deck Sections

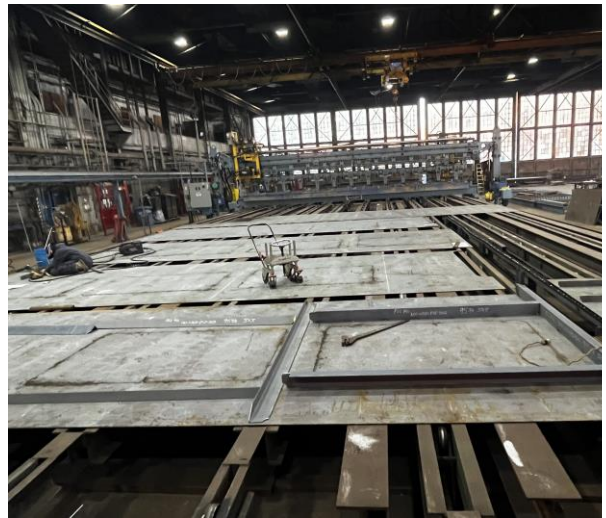


3386 – Module 10 Bulkhead Fabrication

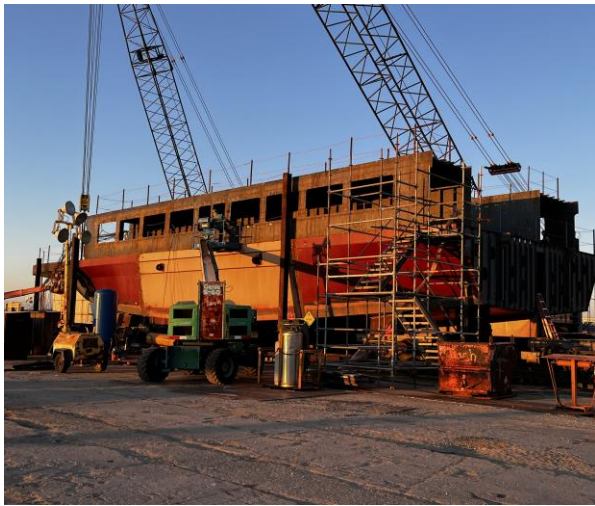
MEMO



3422 – Module 10 Deck and Bulkhead Fabrication
(on the Panel Line)



3424 - Module 10 Bulkhead Fabrication

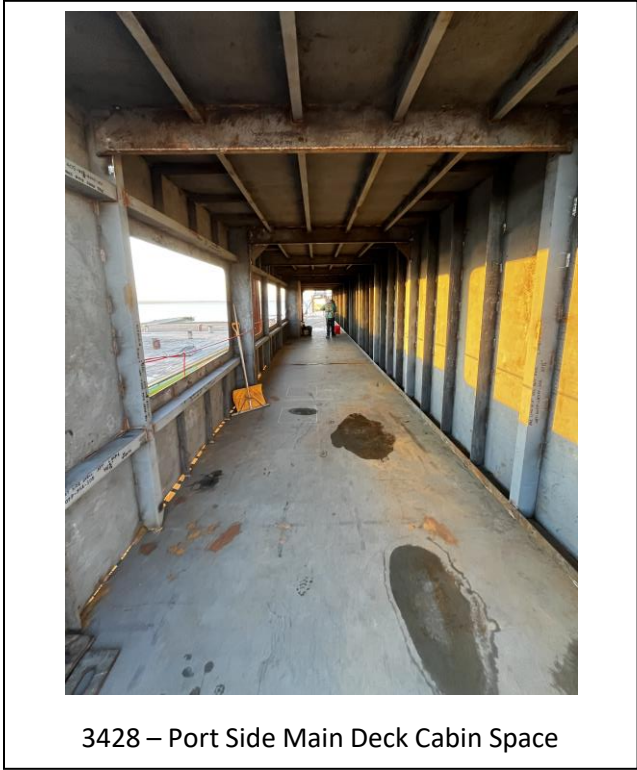
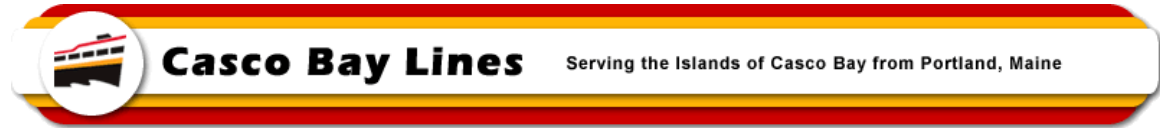


3425 – Port Side View of Vessel with Module 1 in
Place

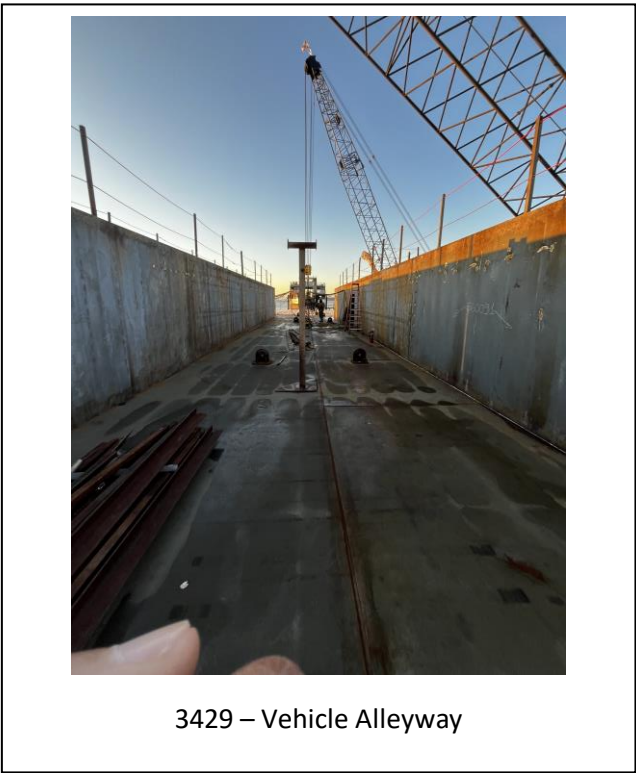


3426 - Port Side View of Vessel with Module 1 in
Place

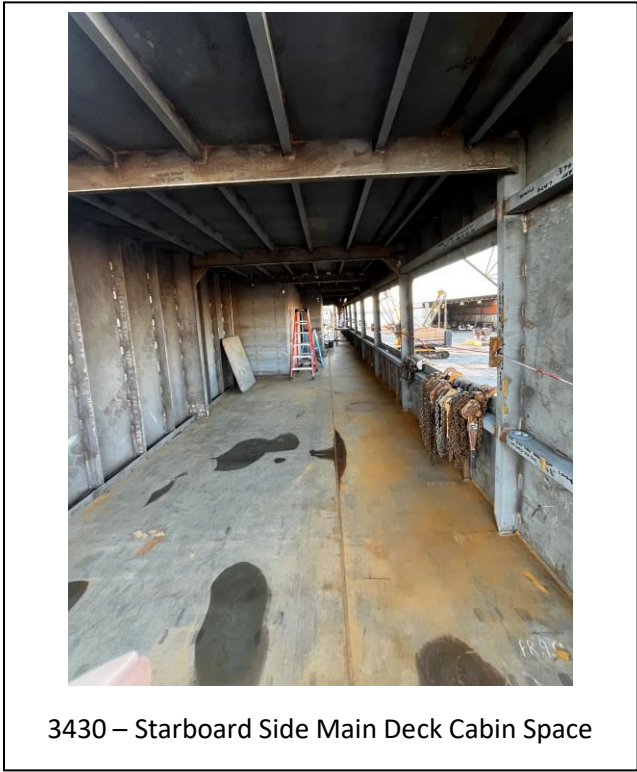
MEMO



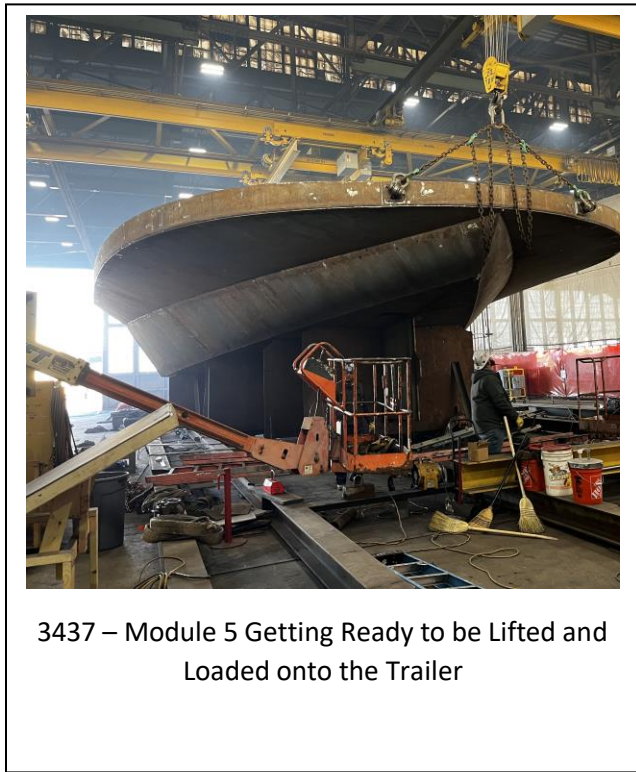
3428 – Port Side Main Deck Cabin Space



3429 – Vehicle Alleyway

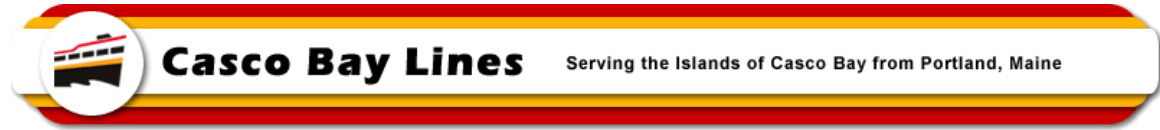


3430 – Starboard Side Main Deck Cabin Space



3437 – Module 5 Getting Ready to be Lifted and Loaded onto the Trailer

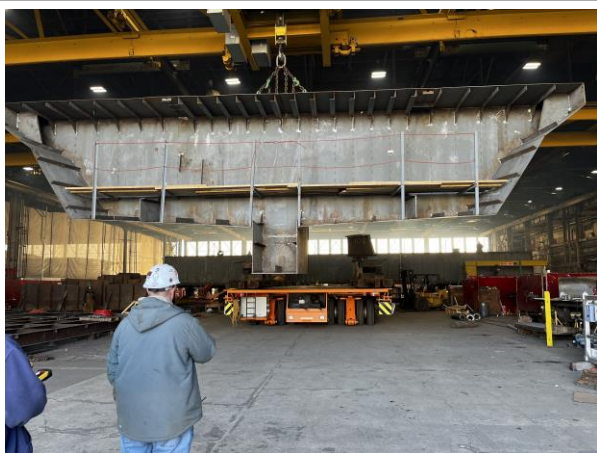
MEMO



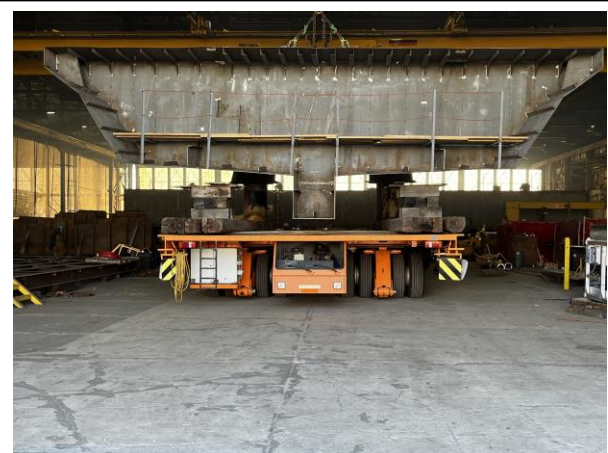
3438 – Module 5 Being Loaded onto the Trailer to be Moved to the Assembly Area



3439 - Module 5 Being Loaded onto the Trailer to be Moved to the Assembly Area

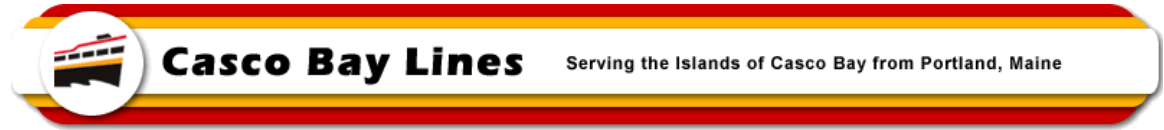


3440 - Module 5 Being Loaded onto the Trailer to be Moved to the Assembly Area



3441 - Module 5 Being Loaded onto the Trailer to be Moved to the Assembly Area

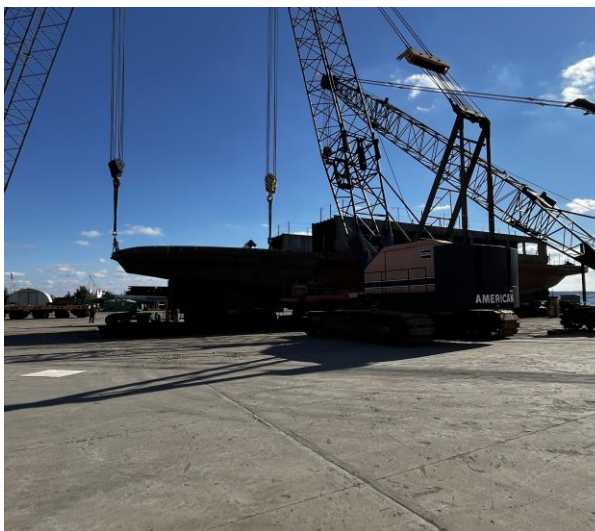
MEMO



3442 – Module 5 Being Aligned with the Other Modules



3443 – Module 5 Being Lifted onto the Blocking in the Assembly Area

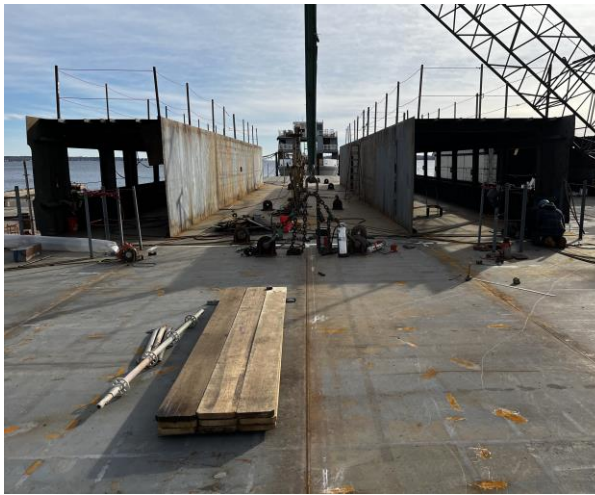
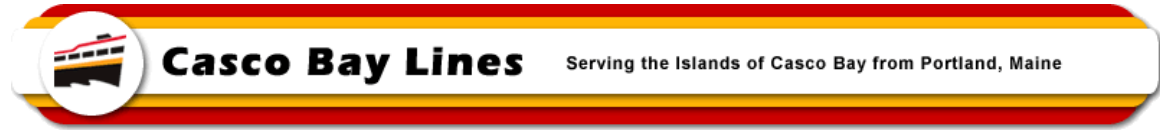


3444 - Module 5 Being Lifted onto the Blocking in the Assembly Area



3445 - Module 5 Being Lifted onto the Blocking in the Assembly Area

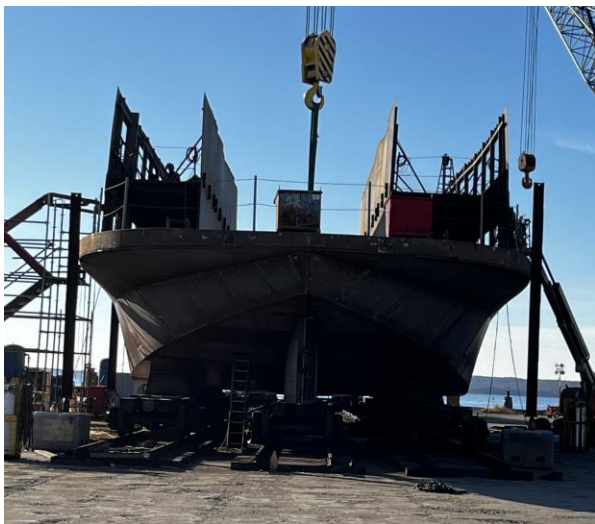
MEMO



3451 – Checking Module 5 Alignment with Other Modules



3461 – Setting Module 10 Bulkhead (01 Deck Cabin) on Port Side

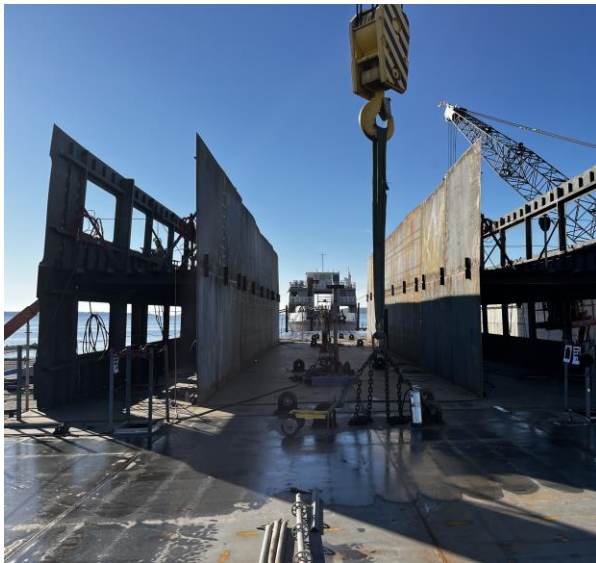
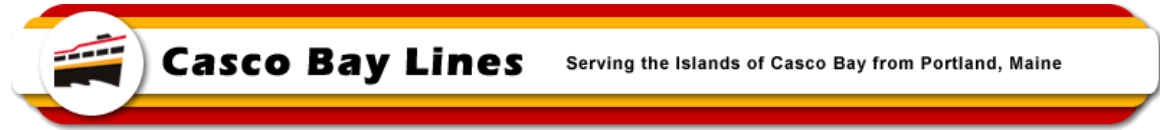


3469 – Module 7 Bulkheads in Place

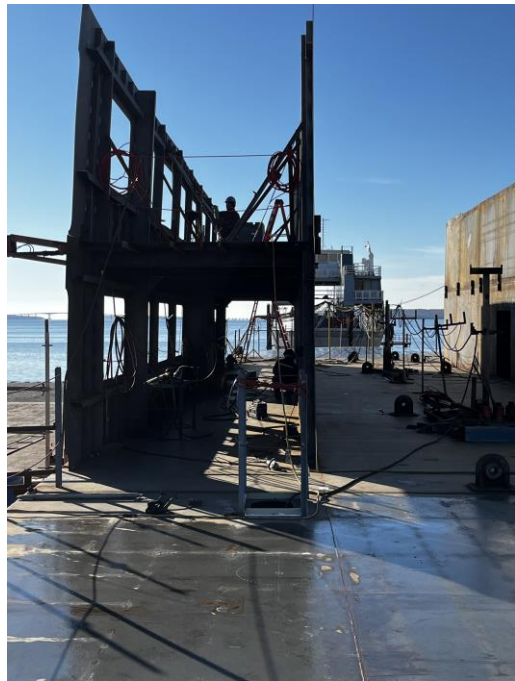


3470 – View of Starboard Side with Module 7 Bulkheads in Place

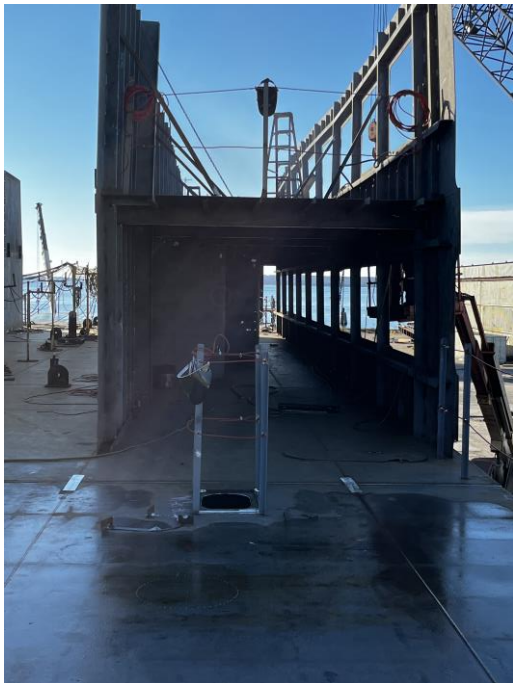
MEMO



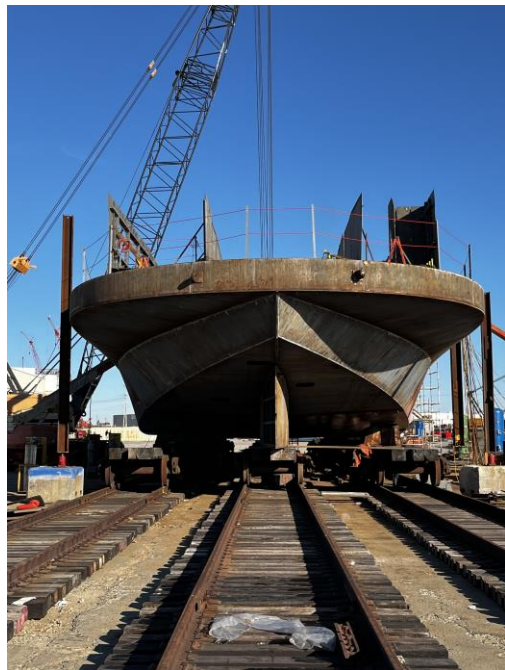
3471 – From Stern Looking Down Vehicle Alleyway Towards Bow with Maine State Ferry Vessel in Background



3472 – Port Side Cabins

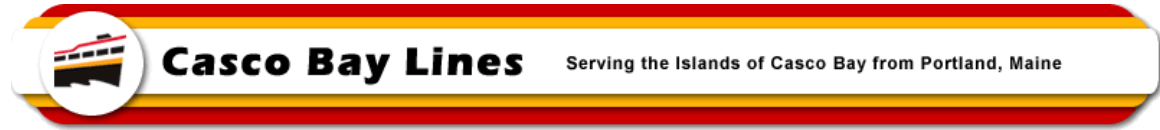


3473 – Starboard Side Cabins



3475 – Looking at Bow from Ground Level

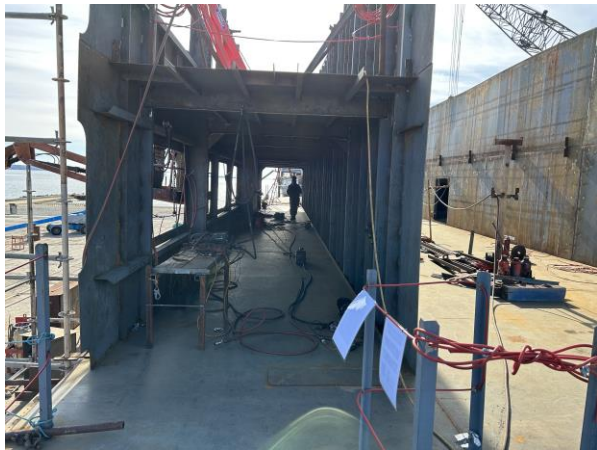
MEMO



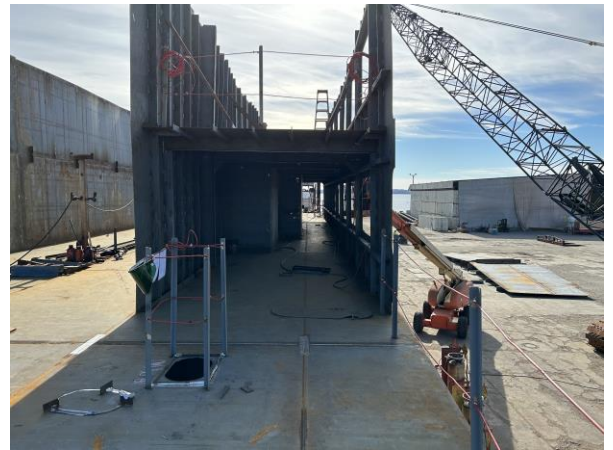
2419 – FTA Site Visit, Looking at Starboard Side of Vessel



2421 – View from Stern End Looking Down Starboard Side

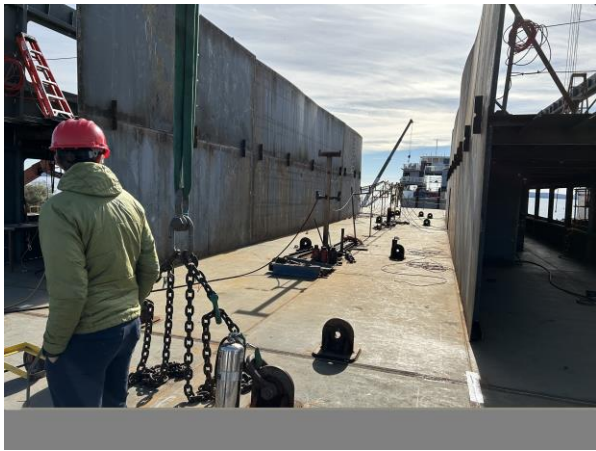
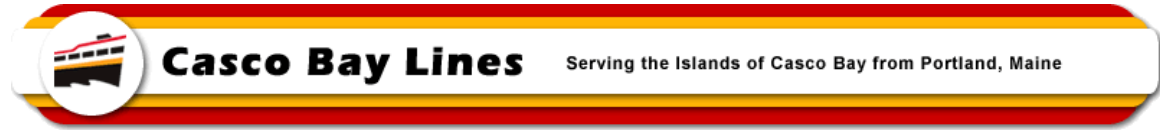


2425 – Port Main Deck Cabin Space From Stern



2426 – Starboard Main Deck Cabin Space From Stern

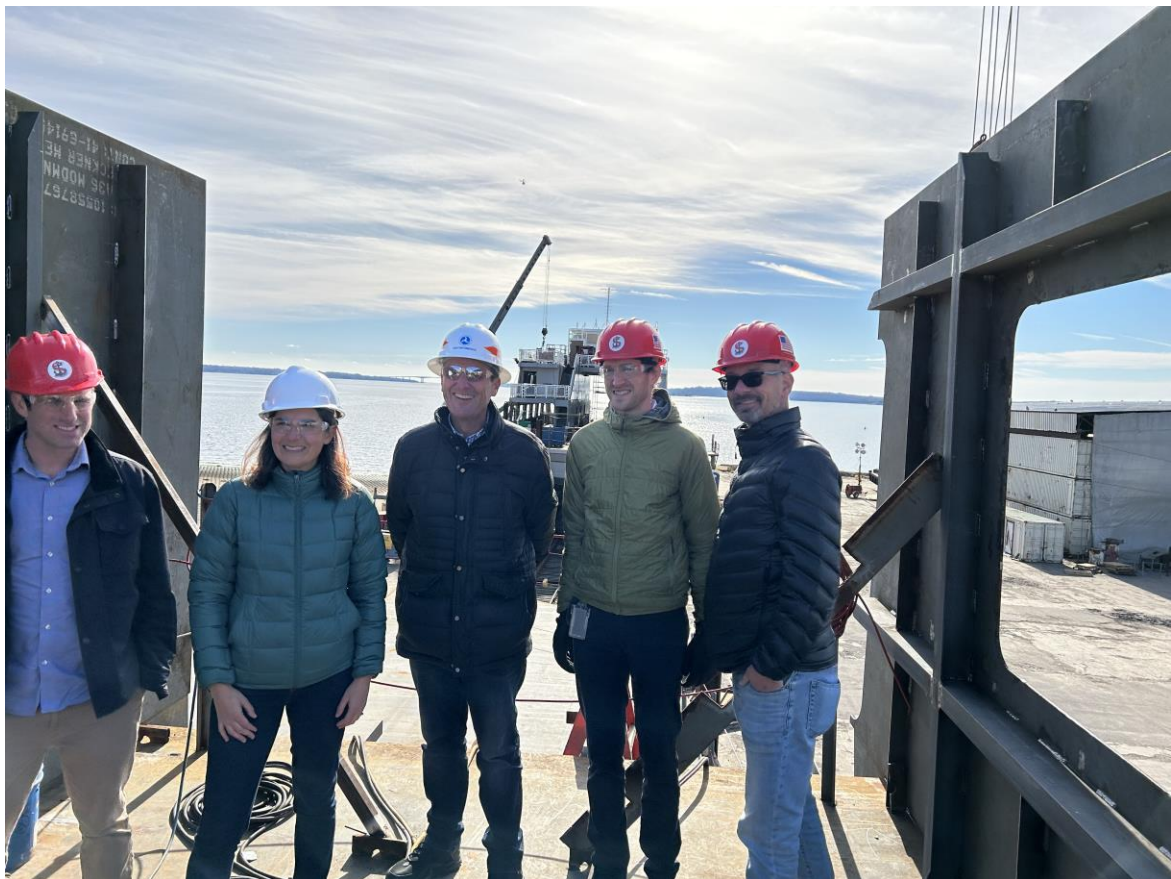
MEMO



2427 – Vehicle Alley Way from Stern

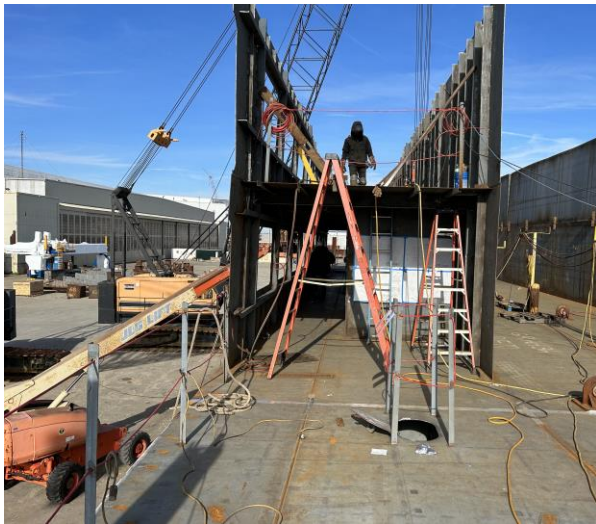
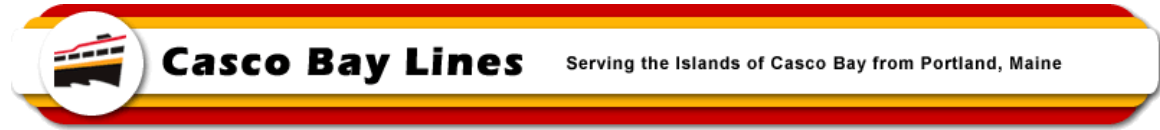


2428 – Senesco Project Manager with FTA Staff

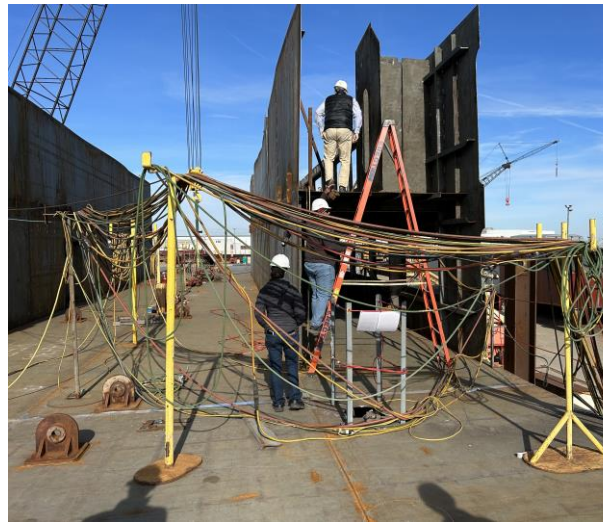


2430 – FTA Team

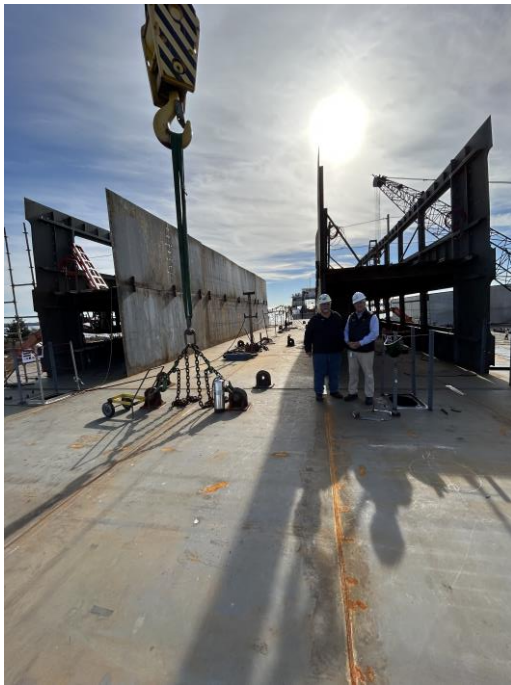
MEMO



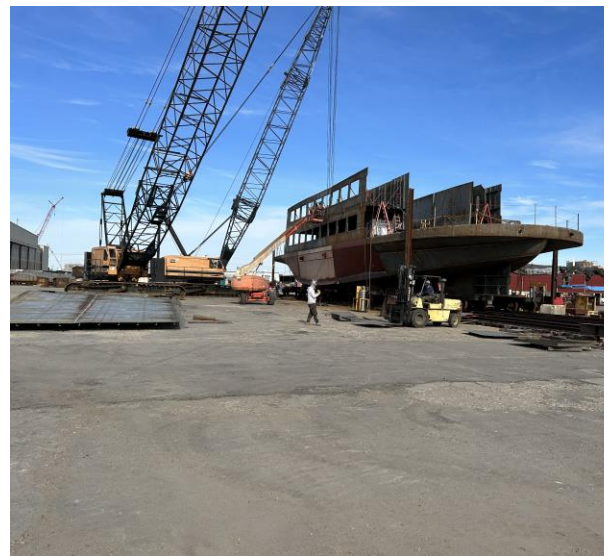
2432 – Starboard Cabin Space from Bow



2433 – Port Cabin Space from Bow

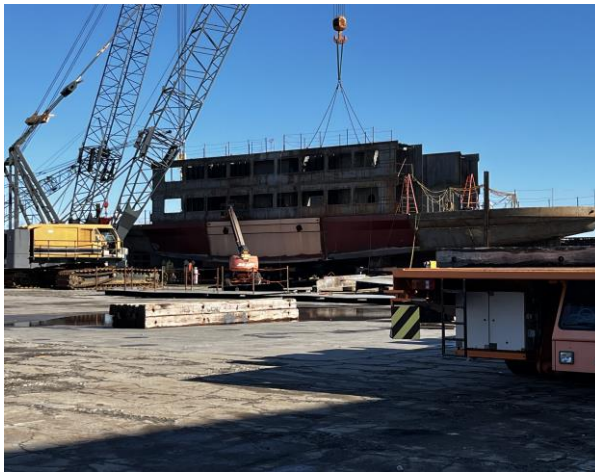
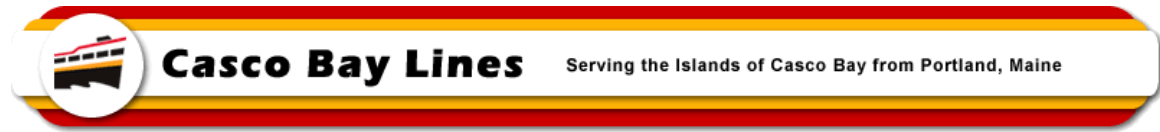


2435 – CBL Team on Stern End



2438 – View from Bow End with All Cabin Bulkheads in Place

MEMO



3496 – Setting 02 Deck Plate Sections on Top of 01 Cabin Spaces.



3501 – View of Port Side of Vessel

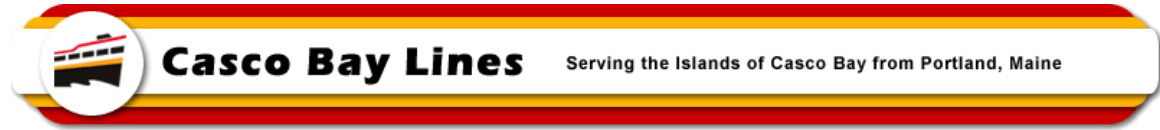


3502 – Placing 02 Deck Plating Over the Vehicle Alleyway



3503 - Placing 02 Deck Plating Over the Vehicle Alleyway

MEMO



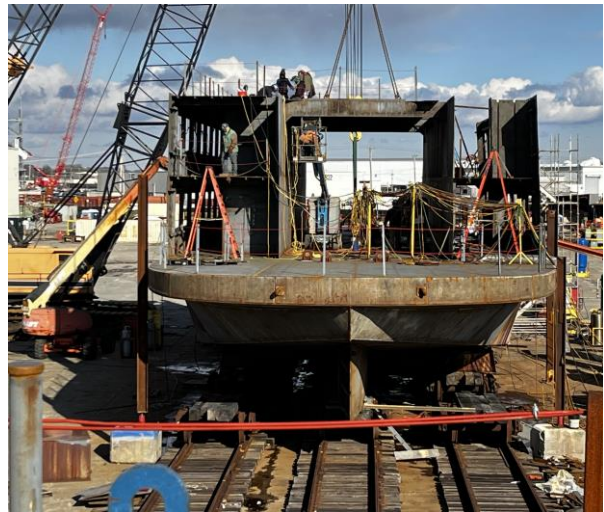
3504 - Placing 02 Deck Plating Over the Vehicle Alleyway



3505 - Placing 02 Deck Plating Over the Vehicle Alleyway

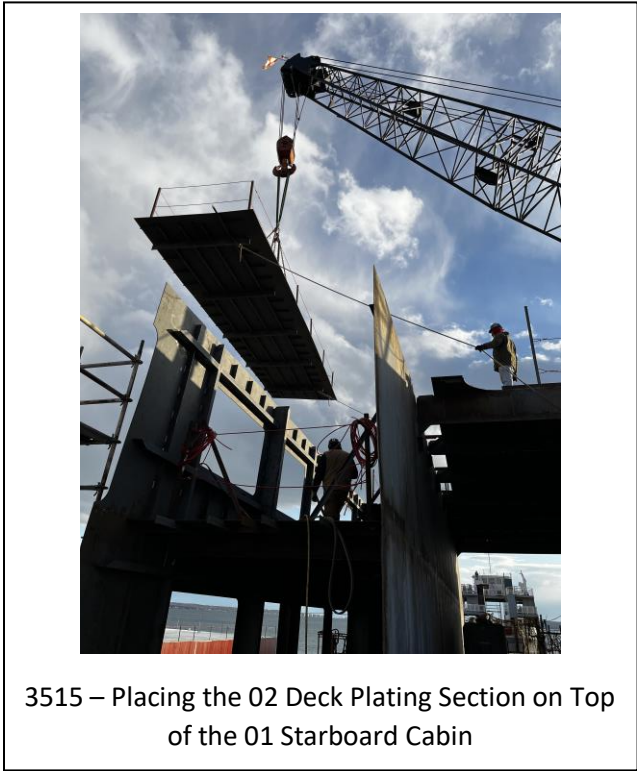
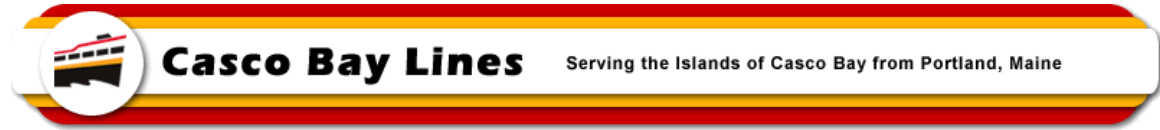


3506 - Placing 02 Deck Plating Over the Vehicle Alleyway

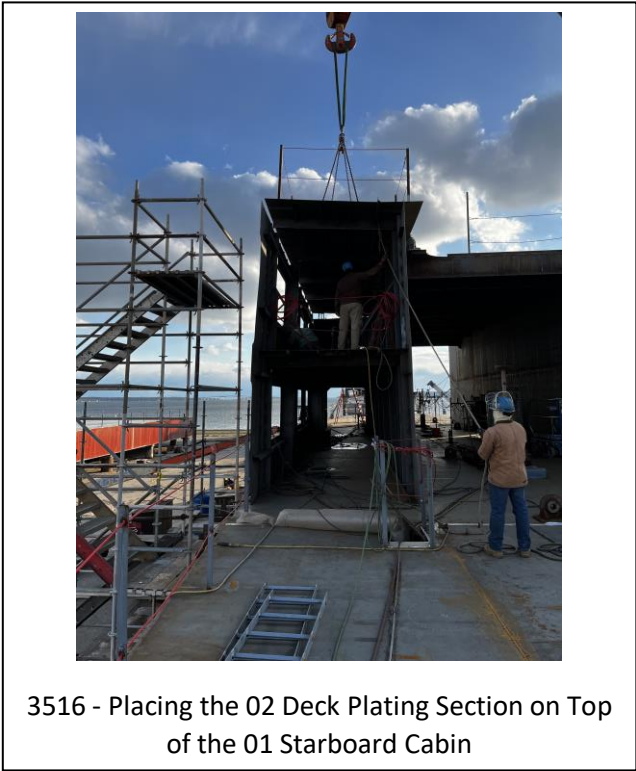


3510 - Placing 02 Deck Plating Over the Vehicle Alleyway

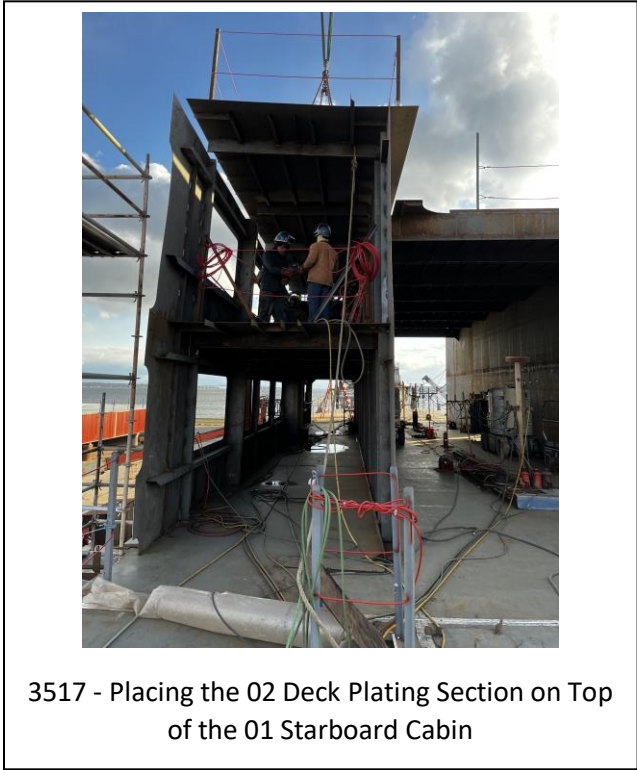
MEMO



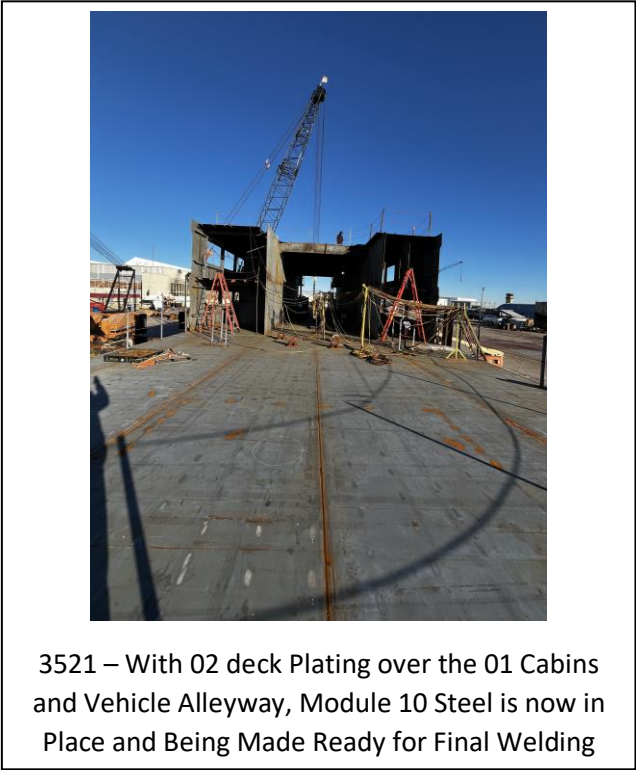
3515 – Placing the 02 Deck Plating Section on Top of the 01 Starboard Cabin



3516 - Placing the 02 Deck Plating Section on Top of the 01 Starboard Cabin

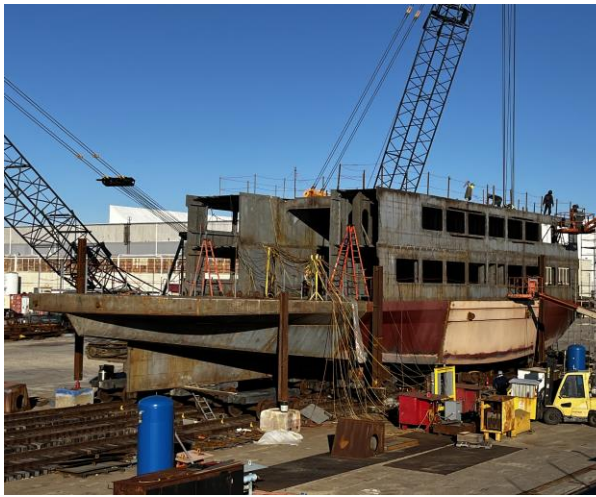
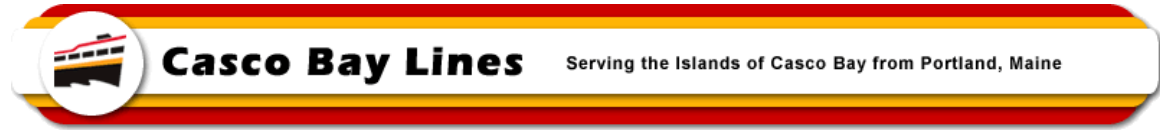


3517 - Placing the 02 Deck Plating Section on Top of the 01 Starboard Cabin



3521 – With 02 deck Plating over the 01 Cabins and Vehicle Alleyway, Module 10 Steel is now in Place and Being Made Ready for Final Welding

MEMO



3524 – View from Bow End Down Port Side



3529 - 01 Port Cabin Space

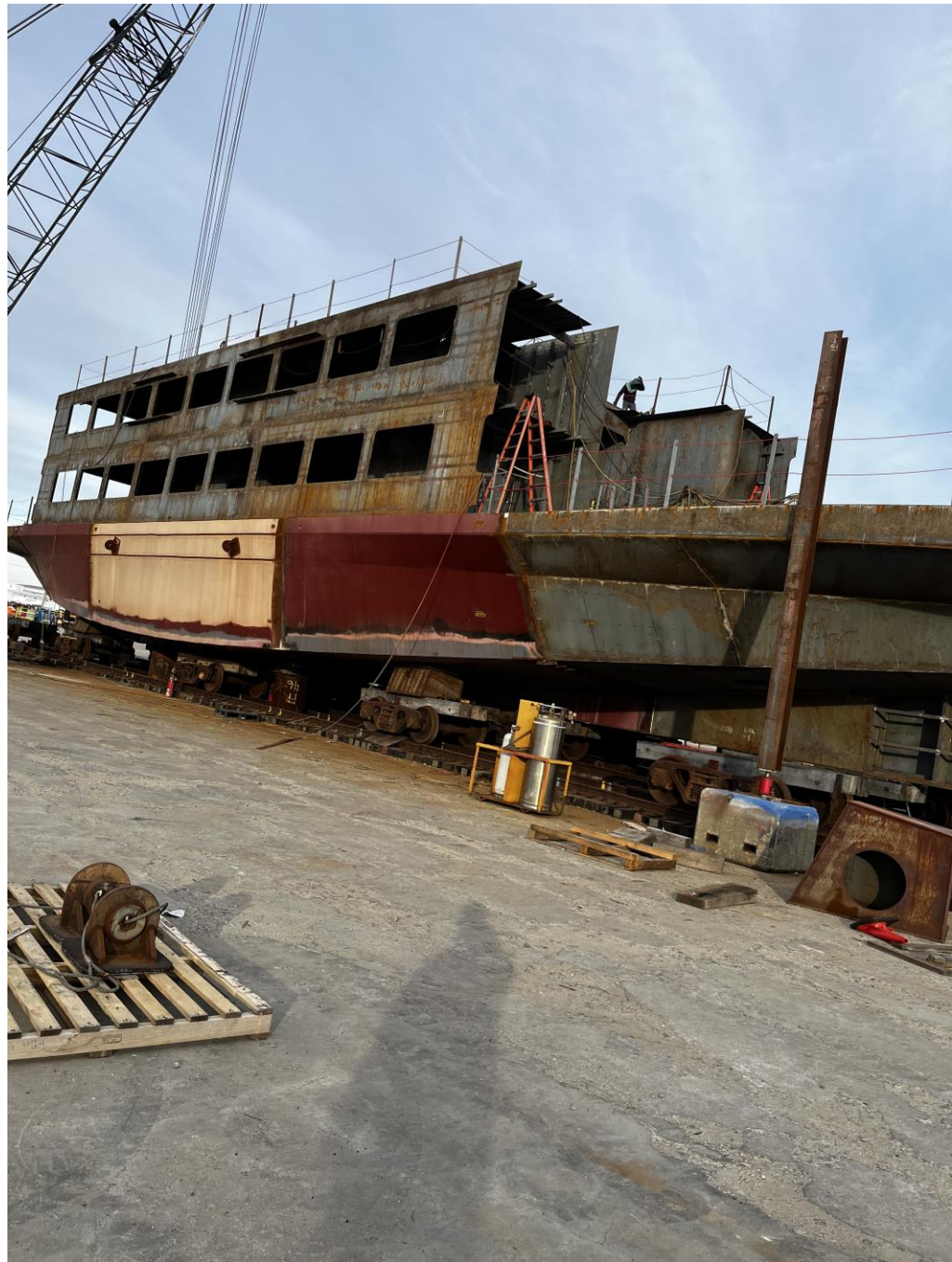
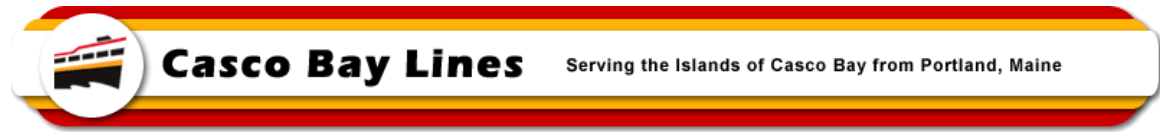


3530 – 01 Starboard Cabin Space



3531 – View of Port Side

MEMO



3532 – As of 11-30 2023